

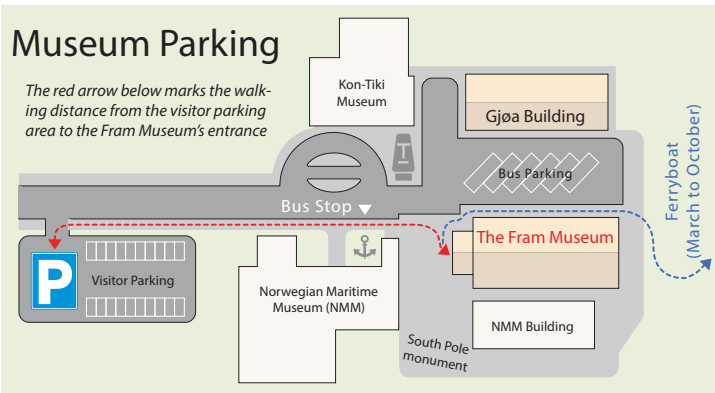
THE FRAM MUSEUM

Bygdøynesveien 39, 0286 Oslo, Norway

Tel: +47 – 23 28 29 50 www.frammuseum.no

DID YOU PARK YOUR CAR OUTSIDE?

Please note that the only valid parking lots are marked on the map below. Remember to pay the parking fee before entering the museum.



facebook



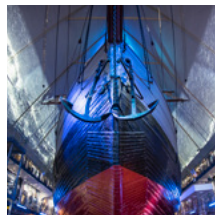
THE FRAM MUSEUM IS SUPPORTED BY:



KVERNER



SELECTED MUSEUM HIGHLIGHTS:



The Polar Ship *Fram*

Go on board and explore one of Norway's definitive national treasures - the polar ship *Fram* - the strongest wooden ship ever built, breaking all previous farthest north and farthest south records.

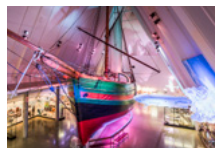
The new 270° surround film experience

Our surround polar environment experience runs from the deck of *Fram*, continuously all day.



Super widescreen introduction film in 10 languages

Start your tour in our widescreen theatre in the Gjøa-building. Enjoy the 12-minute introduction to polar history and a spectacular northern lights footage. Turn the knob to choose among the 10 languages. The show runs every 15 minutes all day.



The Gjøa Building

Our second building houses *Gjøa* - the first ship through the Northwest Passage - and many new exhibitions. Enter downstairs through our own Northwest Passage, learning about the 400 years it took to find this elusive sea route.



Trapped in Ice

Enter our polar expedition simulator. What happens when a ship is caught in the ice and slowly ground to pieces? Warning: Moving floor, freezing cold and ice.



Framheim Café

Enjoy hot and cold drinks and a freshly made sandwich in our café *Framheim* - inspired by Roald Amundsen's wintering hut in the Antarctic. Outside terrace area in the Spring/Summer. We also offer free Wi-Fi in the café area.

Museum Map THE FRAM MUSEUM



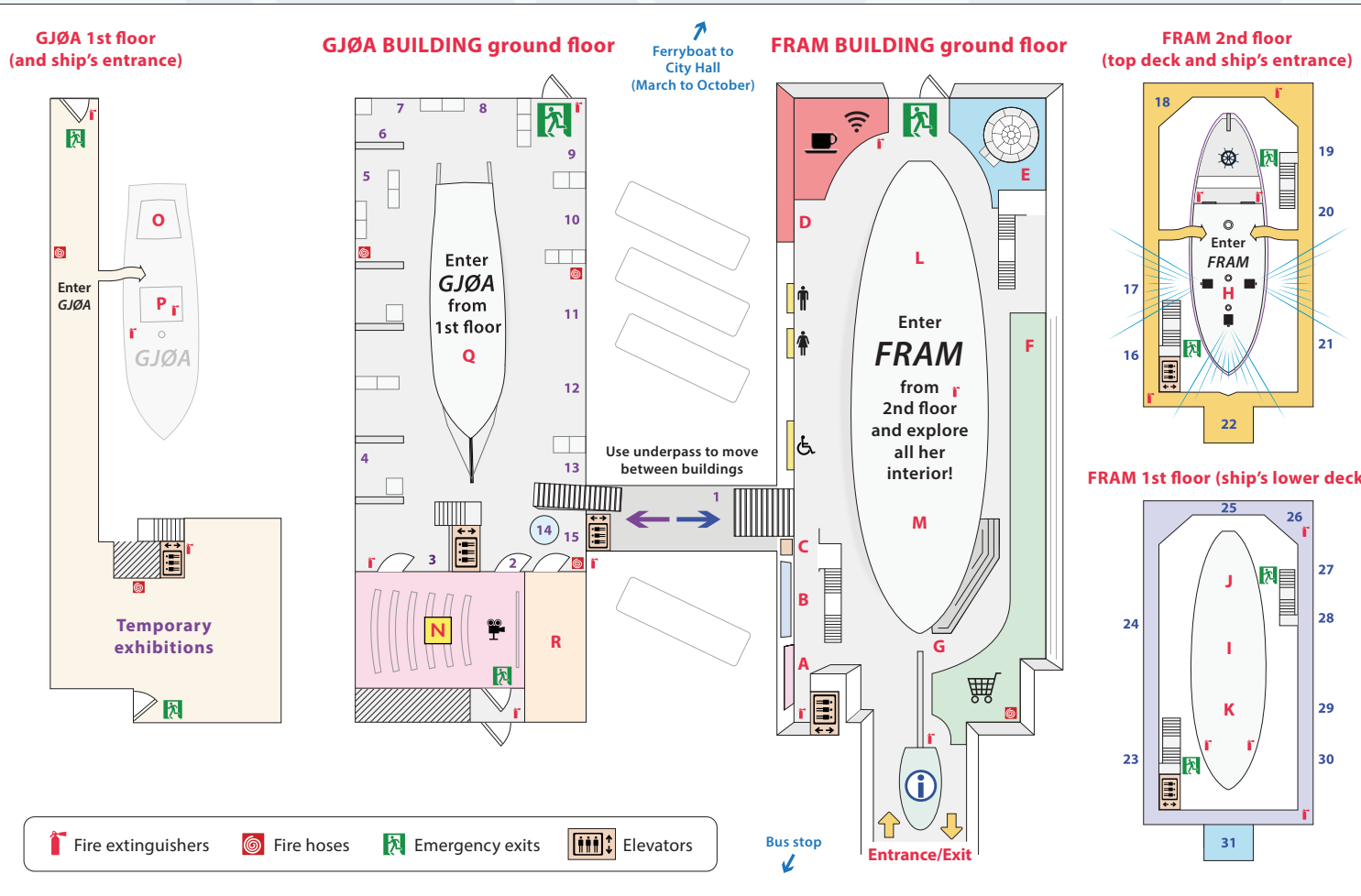
GJØA BUILDING:

- 1 Exploration of the Northwest and Northeast Passage
- 2 Widescreen Cinema
- 3 The Franklin Expedition
- 4 The Gjøa Expedition
- 5 Gjøa Haven today
- 6 Henry Larsen and St. Roch
- 7 Nansen's winter in Greenland
- 8 Eivind Astrup
- 9 The 2nd Fram Expedition
- 10 The Maud Expedition
- 11 Amundsen's flight to 88°
- 12 The Norge Airship Expedition
- 13 Amundsen's last expedition
- 14 Interactive films screen
- 15 The Arctic today

- N The Cinema
- O Gjøa's aft cabin
- P Galley, entry to below deck
- Q Below deck on Gjøa
- R Conference Room

We recommend starting the exploration in the cinema (N).

All translations are available on touch screens in the exhibitions.



FRAM BUILDING:

- 16 Exploration of the North
- 17 The 1st Fram Expedition
- 18 *Fram* in the ice
- 19 The life of Fridtjof Nansen
- 20 Science in the polar regions
- 21 Navigation
- 22 Explorers Club

- 23 Exploration of Antarctica
- 24 The South Pole Expedition
- 25 Race to the South Pole
- 26 Scott's sledge
- 27 Roald Amundsen's expedition
- 28 *Fram* crewmembers
- 29 Other polar pioneers
- 30 The dogs
- 31 Trapped in Ice - a polar simulator

- A Personal storage boxes
- B Visitor information
- C Wheelchair elevator
- D Café with WiFi access
- E The igloo and games area
- F Books, DVDs, Souvenirs
- G Mini amphitheatre
- H 270° Surround film experience
- I *Fram's* galley and workstations
- J The Aft Saloon and cabins
- K The Fore Saloon and cabins
- L Engine room
- M Cargo hold and film